

Chief Architect® Home Designer® 2012

Download & Installation Instructions

Chief Architect, Inc.

6500 N. Mineral Dr.

Coeur d'Alene, Idaho 83815

www.HomeDesignerSoftware.com

Contents

Installation

What's Included with the Software	3
System Requirements	4
Downloading Home Designer Software	4
Installing Home Designer	7
Starting Home Designer	12
Troubleshooting Problems	17
Program Updates	17
Installing on Multiple Computers	18
For Home Designer Pro: Deactivating a License	18
Uninstalling Home Designer Software	19

Additional Resources

Tool Tips and the Status Bar	20
Help Contents and Index	21
Home Designer Tutorials	22
Reference Manual & User's Guide PDFs	22
Tutorial Videos	23
Home Designer Web Site	23
Home Talk User Forum	23

Installation

This section will help you install your Home Designer software.

- What's Included with the Software
 - System Requirements
 - Downloading Home Designer Software
 - Installing Home Designer
 - Starting Home Designer
 - Troubleshooting Problems
 - Program Updates
 - Installing on Multiple Computers
 - For Home Designer Pro: Deactivating a License
 - Uninstalling Home Designer Software
-

What's Included with the Software

Your Home Designer purchase includes the following:

- Home Designer download manager
- Home Designer Program DVD (optional purchase if program was downloaded)
- For Home Designer Pro: Hardware Lock (optional)
- Your Product Key, or software license activation code

System Requirements

In order to install and run Home Designer 2012 software, your computer system must meet the following minimum requirements:


- 32- or 64-bit Windows® 7/Vista; 32-bit Windows® XP
- 2.4 GHz processor
- 2 GB of memory
- 6 GB of available hard disk space
- 256 MB of dedicated video memory, OpenGL 2.1 or higher
- High speed Internet for registration, video access, content downloads
- DVD drive (if optional backup DVD was purchased)

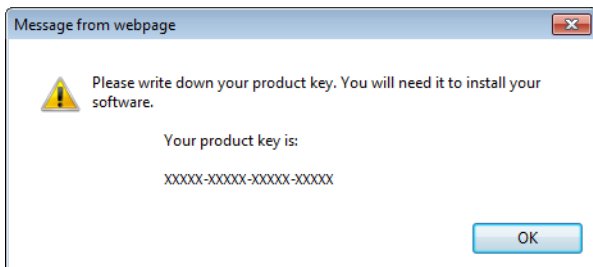
Visit our web site, www.HomeDesignerSoftware.com, for more information.

Downloading Home Designer Software

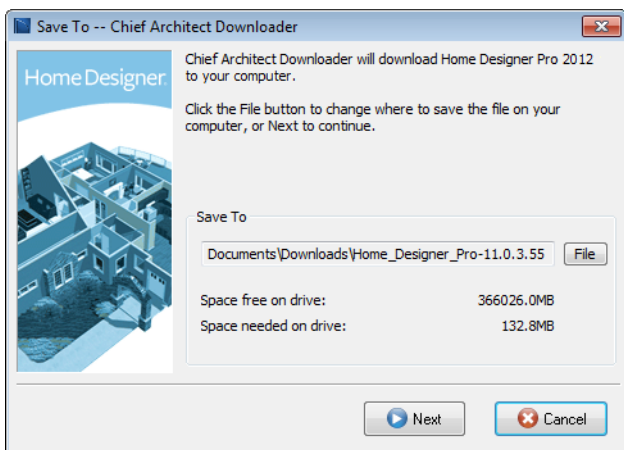
To download and install Home Designer software, you will first run the Home Designer Download Manager and use it to download the Home Designer software installer.

These instructions assume use of Internet Explorer. The steps may vary somewhat if you are using a different internet browser.

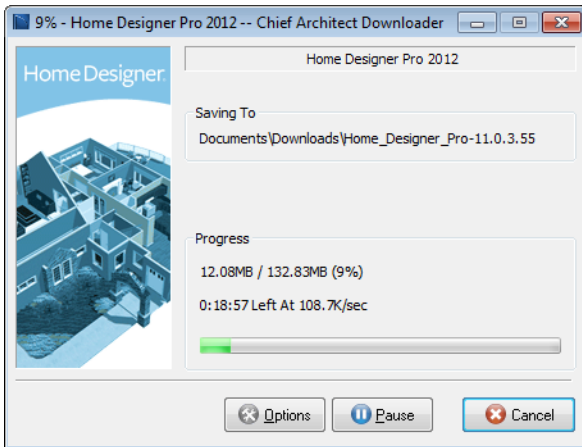
1. Log in to your online Home Designer account and browse to the Digital Locker page.
2. Click the  button.



3. A dialog will open, providing you with your Product key and recommend that you write it down. Your Product key is required to activate your software. It can also be found on your Digital Locker page.
4. In the **File Download - Security Warning** dialog that opens, click **Run**. This dialog may vary depending on the internet browser you are using.
5. A progress dialog will display briefly as the download manager for your product's installer download prepares to launch.
6. When the download manager is ready to launch, a second **Internet Explorer - Security Warning** message may appear. Click the **Run** button to continue.



7. The **Save To - Home Designer Downloader** dialog opens next.
 - By default, the Home Designer installer file downloads to your Documents directory, in a folder named Downloads.
 - Click the **File** button if you would like to select a different location on your computer to save the Home Designer installer.
 - Click **OK** to begin the download.



8. The **Home Designer Downloader** progress dialog will open next. The installer may take an hour or more to download, depending on your Internet connection.
 - The **Saving To** section of the dialog box states the location on your computer where the installer is being saved and its name.
 - The **Progress** section indicates how much of the installer has been downloaded thus far, how fast it is being downloaded and estimates how much more time will be needed.
9. If you wish, click the **Options** button and choose whether to:
 - **Run This Program When Done** downloading. This option is selected by default. Click to uncheck it if you prefer to run the installer at a later time.
 - **Finish Downloading Later.** Select this option to stop the download. You can later resume where you left off by double-clicking on either the Download Manager acquired in steps 2 and 3 above or the Finish Downloading Home Designer shortcut created on your Windows Desktop. This shortcut is created only when this option is chosen and is deleted when the download is completed.
 - Use **Proxy Server Settings.** Choose this option only if you use a proxy server.

10. You can click the **Pause** button to temporarily halt the download. You can then click the **Resume** button to continue it.
11. You can also click the **Cancel** button to cancel the download entirely. The downloader will ask you if you would like to finish later: click **Yes** to Finish Download Later, as described above; click **No** to cancel the download and start again later.

Files Sizes and Approximate Times to Download

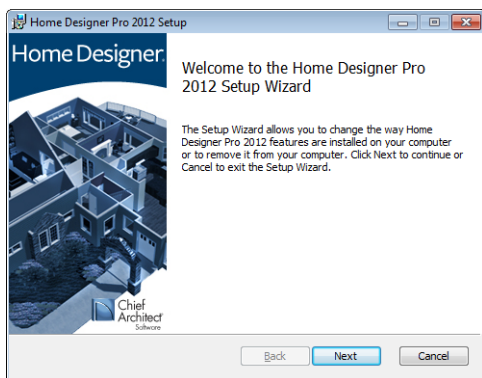
Program	File Size	384 KB/s	96 KB/s
Home Designer Pro 2012	298.9 MB	0:13	0:53
Home Designer Architectural 2012	220.3 MB	0:10	0:39
Home Designer Suite 2012	191.0 MB	0:09	0:34
Home Designer Interiors 2012	173.0 MB	0:08	0:31
Home Designer Essentials 2012	160.5 MB	0:07	0:29
Home Designer Landscape and Deck 2012	159.6 MB	0:07	0:28

Installing Home Designer

When the installer file is completely downloaded, the Setup Wizard will launch automatically.

If it does not, browse to the location where you saved it, which is Documents\Downloads by default, then double-click on the file with the title of your Home Designer program in its name, followed by a version number.

Setup Wizard Welcome



1. If you have not installed the program before, the Welcome window will display. Click **Next** to continue.

Setup Maintenance



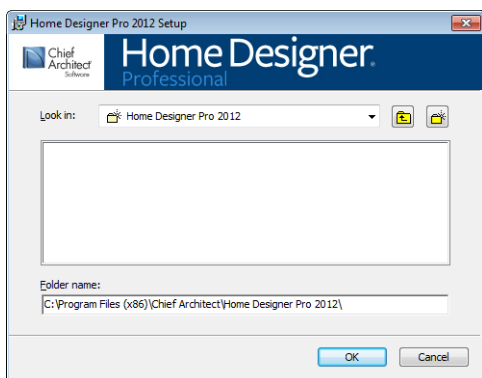
2. If you have installed the program before, this window will display, allowing you to reinstall or uninstall the program. If you are installing the program for the first time, this window will not display.

License Agreement



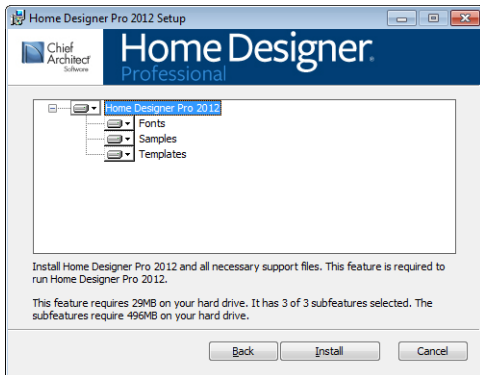
3. Read the License Agreement carefully. You must check the box beside **I accept the terms and conditions of this license agreement** before installing.
 - Click the **Advanced** button to specify a non-default installation location or exclude supplementary content from being installed.
 - Click **Install** to begin installing the software. The Setup Wizard will copy files to your hard disk, which may take a few minutes.

Choose Destination Location



4. This window appears only if you click the **Advanced** button, and then the **Change** button, in the previous windows. Choose the destination folder for the program. By default, the program installs in a folder with the C:\Program Files\Chief Architect\Home Designer Pro 2012, in a folder with the same name as your program version. You can, if you wish, choose a different destination folder on the local machine.
- If you prefer a different location, click the drop-down arrow to the right of the **Look in:** location and navigate to the desired location on your hard drive.
 - You can also type the full pathname of the installation directory in the **Folder name:** field.
 - Click **OK** to proceed to the next window.

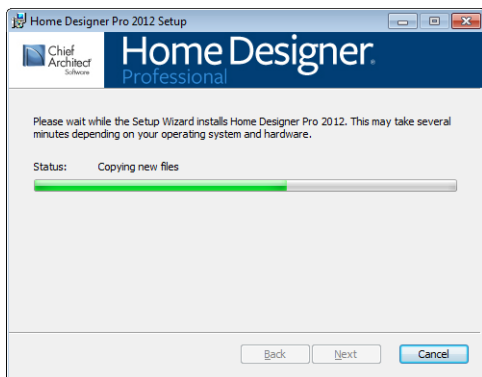
Choose Items to Install



5. You can use this window to specify what features to install.
- Click on a line item to select it. Information about its contents and hard drive space requirements displays beneath the list of features.
 - Click the drop-down arrow beside a line item to specify how it is installed. By default, **Entire feature will be installed** is selected for all line items.

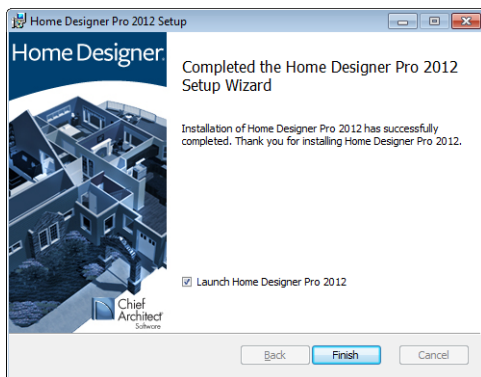
- Select **Entire feature will be unavailable** to prevent a selected feature from being installed. When this option is selected, a red X will display beside the line item's drop-down arrow.
- Click **Install** to install the program and supplemental content as specified.

Install



6. Click **Install** to continue. The Setup Wizard will begin copying files to your hard disk after a few moments and a green progress bar in this window will show the status of this process. This may take a few minutes.
- The installer checks your hard drive for enough space to install the software successfully. If it does not find enough space, a warning message will display. You may be able to resolve this issue by running the Disk Cleanup Utility on your system. To learn more, see www.microsoft.com/atwork/maintenance/speed.aspx.

Setup Wizard Complete



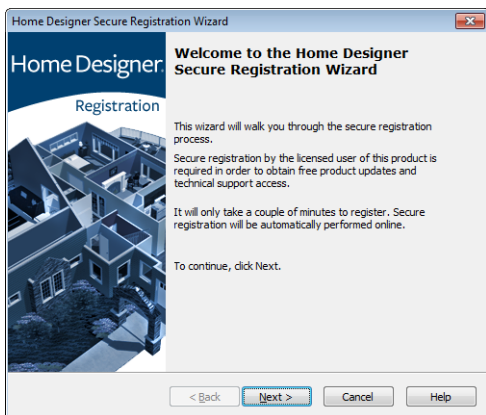
7. When all files have been copied, this dialog will display. Click **Finish** to launch Home Designer.
-

Starting Home Designer

You can use the Start menu or the shortcut on your desktop to start Home Designer.

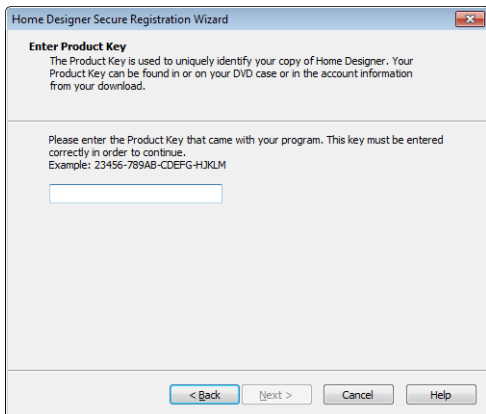
When you launch the program for the first time, the Registration Wizard will open. In order to register, you must have access to the Internet.

Registration Wizard



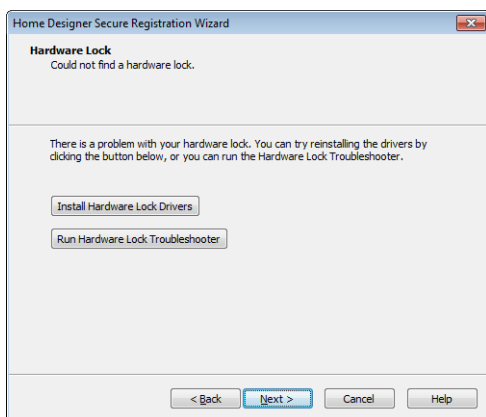
1. Click **Next** to continue.

Enter Product Key



2. Enter your Product Key, which is located on a sticker inside your DVD case or in the account information from your download, then click **Next** to continue.

Hardware Lock



3. If your Home Designer Pro program license uses hardware lock security, and either your hardware lock is not plugged in or a driver for the lock is not detected, this window will appear.
 - Make sure that your hardware lock is plugged into the computer and is lit up and click **Next**.
 - If this window remains open, click the **Install Hardware Lock Drivers** button to install the most current driver for your lock. Then click **Next**.
 - If, with the new driver installed, this window is still present, click the **Run Hardware Lock Troubleshooter** button for more information.

User Information

The screenshot shows a window titled "Home Designer Secure Registration Wizard" with a close button in the top right corner. The main heading is "User Information". Below it, a sub-heading reads "This information is used to identify you as the registered user of this product." followed by a note: "* indicates required items." The instruction "Please enter the following information." is followed by four input fields: "Name: *" (with an asterisk), "Company Name:", "Phone Number:", and "E-mail Address: *" (with an asterisk). Below these fields is a note: "Note: This information is used to authenticate your right to use this product and to notify you of free updates and important information." At the bottom, there are four buttons: "< Back", "Next >" (highlighted in blue), "Cancel", and "Help".

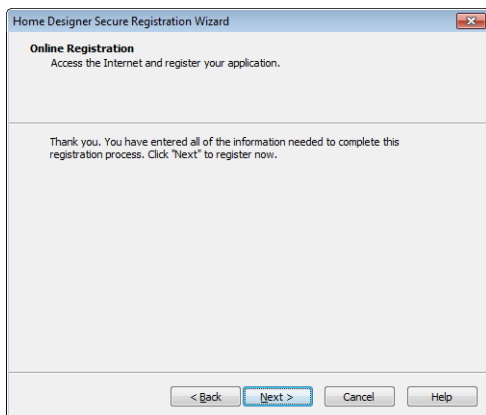
4. Enter your contact information. When you click **Next**, you will be asked to confirm your e-mail address.

Mailing Address

The screenshot shows a window titled "Home Designer Secure Registration Wizard" with a close button in the top right corner. The main heading is "Mailing Address". Below it, a sub-heading reads "This information is used to identify you as the registered user of this product." The instruction "Please enter your mailing address." is followed by five input fields: "Street:" (with a scroll bar), "City:", "State/Province:", "Zip/Postal Code:", and "Country/Region:". Below these fields is a note: "Note: This information is used to authenticate your right to use this product and to notify you of free updates and important information." At the bottom, there are four buttons: "< Back", "Next >" (highlighted in blue), "Cancel", and "Help".

5. Enter your mailing address and click **Next** to continue.

Online Registration



6. Click the **Next** button to register online.

Completing the Registration Wizard



7. Your registration is nearly complete.
 - For Home Designer Pro: Write down your **Emergency Transfer Password** and store it in a safe location. This information does not display if you have hardware lock security.

- Click **Print Registration Information** to print a copy of the registration for your own records.
 - Click **Finish** to close the Registration Wizard and launch Home Designer.
-

Troubleshooting Problems

If you encounter problems either downloading or registering your software, the following suggestions may be helpful.

- Make sure that you can visit our web site using Internet Explorer.
- Disable your firewall for the duration of the download, installation, and registration process.
- Disable other security applications, including anti-virus and download manager software, for the duration of the download, installation, and registration process.
- Lower your Internet Explorer Security and Privacy settings for the duration of the download, installation, and registration process.



Remember to re-enable all security applications and restore all settings when you are finished downloading, installing, and registering.

Program Updates

From time to time, Chief Architect releases downloadable program updates at www.HomeDesignerSoftware.com.

Whenever an update is available, a dialog will display when the program is opened.

- Click **Yes** to open your default Internet browser to the Program Updates section of the Home Designer web site.
- Click **No** to launch Home Designer.

At any time, you can select **Help> Download Program Updates** from the Home Designer menu to launch your web browser to the Program Updates section of the Home Designer web site.

Installing on Multiple Computers

Licenses of Home Designer Architectural, Home Designer Suite, Home Designer Essentials, Home Designer Landscaping & Deck, and Home Designer Interiors can be installed on up to three different computers at a time for personal use. If you wish to install on a fourth computer, you will need to first uninstall off of one of the first three computers while an Internet connection is active.

For details, please refer to the **End User License Agreement**, found in both the program installer and the User's Guide .pdf.

A license of Home Designer Pro can be installed on as many computers as you wish, but can only be active on one machine at a time. To switch from one computer to another, you must deactivate your license.

For Home Designer Pro: Deactivating a License

A license of Home Designer Pro can be installed on as many computers as you wish, but can only be active on one machine at a time. If you have been running the program on one computer and wish to run it on a different one, you must deactivate your license on the first machine.

To deactivate a Home Designer Pro license

1. Launch the program on the computer where the license is active.
2. Select **Help> Deactivate License** from the program menu.
3. Click **Yes** to confirm that you wish to deactivate the license.
4. After a pause, a second message will inform you that the license has been successfully deactivated.

If you are using hardware lock security, you do not need to deactivate your license. Instead, make sure the program is not running and unplug the lock. Then attach the lock to the computer you wish to use before launching Home Designer Pro.

Uninstalling Home Designer Software

There are two ways remove to Home Designer software from your computer: from the Control Panel and, if you purchased the optional program DVD, using the Setup Wizard. Please note that if you do not have an active Internet connection, your license will not become deactivated when you uninstall.

To remove the program using the Control Panel

1. Double-click the Computer icon on your desktop.
2. Open the Control Panel.
3. Double-click Programs.
4. Find the Home Designer program in the list and click **Remove**.

To remove the program using the Setup Wizard

1. Place the disc in the DVD drive and select **Install** Home Designer from the Home Designer startup window.
2. On the Setup Maintenance page, select **Uninstall** and click **Next**.
3. A message will ask if you would like to remove the selected application and its components. Click **Yes**.

Additional Resources

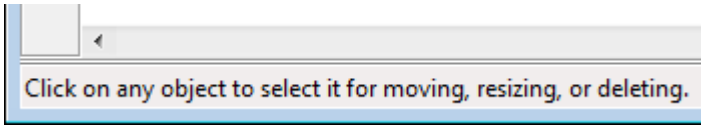
There are many forms of help in Home Designer, including: Tool Tips, the Status Bar, online Help, written tutorials, and product documentation in PDF format. Still more valuable information is available on Home Designer's official web site, www.HomeDesignerSoftware.com.

- Tool Tips and the Status Bar
- Help Contents and Index
- Home Designer Tutorials
- Reference Manual & User's Guide PDFs
- Tutorial Videos
- Home Designer Web Site
- Home Talk User Forum

Tool Tips and the Status Bar

When you move your mouse pointer over a toolbar button or menu item, a Tool Tip displays, offering a brief description of the tool.

More information displays in the Status Bar at the bottom of the program window.

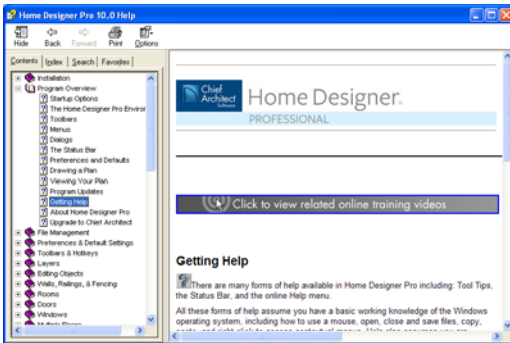


Help Contents and Index



Home Designer's Help Contents and Index is a browsable, searchable resource that provides a description of the tools and dialogs in the program. It can be accessed in several ways:

- Select **Help> Contents and Index** from the menu.
- Place your pointer over any menu item, toolbar button, or selected object. When you see a Tool Tip in the Status Bar, press the **F1** key.
- Click the **Help** button in any dialog.



Help Contents

A list of the available Help Topics is found on the Contents tab.

Click the + beside a heading to view its subheadings, and click on a heading to view the Help page associated with it.

Help Index

The Index tab offers a searchable, alphabetical list of keywords.

Browse this list using the scroll bar or type a keyword in the text field to search for relevant Help pages. The scrollable list below updates to match what you type as closely as possible.

Searching Help

On the Search tab, you can type in any word or phrase that you would like to locate in the Help documentation.

Click the **List Topics** button to see the search results and click the **Display** button to see the Help page containing the word(s) you searched for. The words that you searched for will be highlighted on the page.

Help Favorites

You can create a list of Help pages that you refer to often on the Favorites tab of Home Designer Help.

When you locate a page that you would easily find again in the future, go to the Favorites tab and click the **Add** button. To view a favorite, click on its name in the Topics list, then click the **Display** button. To remove a page from the list, select it and click **Remove**.

Home Designer Tutorials

In addition to a description of each menu item, toolbar button, and dialog in the program, Home Designer includes a collection of written tutorials that describe how to create a plan in the program.

These tutorials can be quickly accessed on the Contents tab of Home Designer Help or by selecting **Help> View User's Guide** from the program menu.

Reference Manual & User's Guide PDFs

The complete contents of the Home Designer Help is available in PDF format. Select **Help> View Reference Manual** or **Help> View**

User's Guide to view either document in Adobe Reader. PDFs can be read on-screen, or you can print any pages you wish.

Tutorial Videos

Home Designer users have access to a collection of online training videos that show you how to perform many tasks in the program. Select **Help> View Online Help Videos** to launch your Internet browser to [_video.homedesigner.chiefarchitect.com/videos](http://video.homedesigner.chiefarchitect.com/videos).

Some Home Designer Help pages also feature links to Tutorial Videos that are relevant to the information on the page.



Home Designer Web Site

Our web site, www.HomeDesignerSoftware.com, has answers to many frequently asked technical support questions. The Help Database contains a variety of articles describing how to resolve common technical problems and achieve specific design goals. New on-line tutorials are added regularly, and we invite you to visit our web site whenever you like.

Home Talk User Forum

Other Home Designer users have a wealth of knowledge they are willing to share. You can link to the Home Talk user forum by selecting **Help> Home Talk** from the Home Designer web site or by going directly to HomeTalk.HomeDesignerSoftware.com.

Chief Architect strives to make our documentation as helpful as possible for all of our customers. Please send any questions, comments, or feedback to Documentation@HomeDesignerSoftware.com .
